



SBZ155

Machining centres



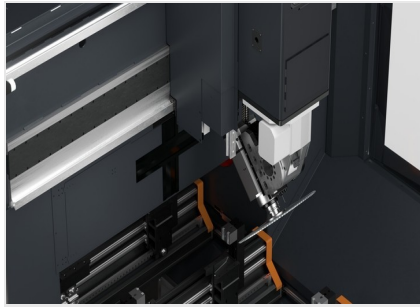
5-axis profile machining to meet the highest requirements, for the first time in a gantry design. The SBZ 155 profile machining centre is a new top-of-the-range elumatec model that combines previously unattained performance with a pioneering design. The faster, more compact and more flexible SBZ 155 raises the bar in automated CNC machining of aluminium and thin-walled steel profiles thanks to optional 6-sided machining, a compact gantry that reduces the footprint despite having one of the largest working ranges in its class.

Industrial and metal construction users benefit from the SBZ 155's short tool changing times that guarantee optimum machining cycles and enormous flexibility. The large on-board magazine can be equipped with 16 standard tools, and depending on the individual configuration, up to ten special tools (Seat for one 200mm and one 550 mm diameter saw blade, max. 4 angle heads). A gantry design and a machining area divided into two zones allow profiles with cross-sections of up to 1,000 x 380 mm to be picked up and passed through, as well as flexible working in shuttle mode. The SBZ 155 can be configured to suit the individual requirements of elumatec customers with a wide range of optional equipment: from automatic length measurement on both sides to a barcode scanner, every need can be met. And the all-rounder is eluCloud ready in order to meet the requirements of Industry 4.0.



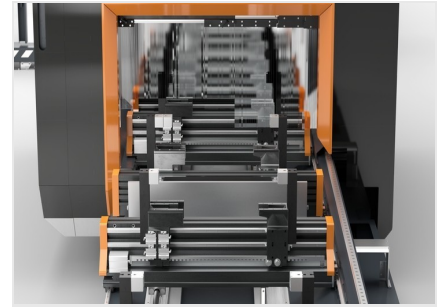
Process monitoring

The large, well laid-out machining area is clearly visible through a generously sized window.



Machining area with tool changer / dish changer

The tool magazine accommodates saw blades, routing and drilling tools, and additional machining units. The rotary tool changer at the top of the gantry reduces on-board changeover times, makes them safe to carry out in the on-board gantry, and also enables tool changes while the X-axis is moving.



Clamp insertion position with quick adjustment

The adaptive clamping technology offers locking positions for quick adjustment to different profile widths. The stop is positioned in a convenient place on the front.



Gantry design for machining large profiles

The arm is guided over the gantry at the front and back, allowing large-volume profiles of up to 1,000 x 380 mm to be machined. The SBZ 155 can handle a high machining volume and has the necessary stability to meet industrial requirements.



Lasers to protect the machining area

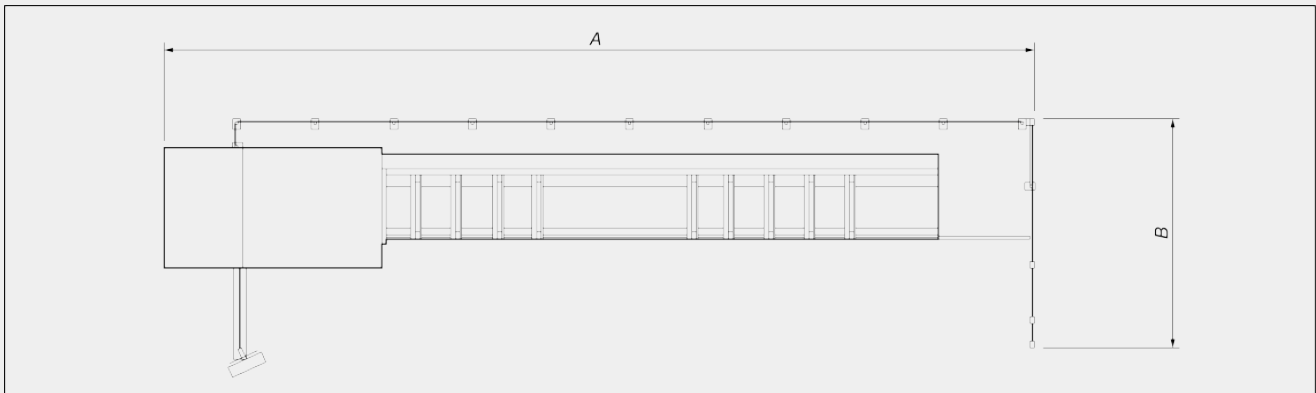
In shuttle operation, individual parts can be machined in two separate clamping zones, and a state-of-the-art safety system makes the machining areas easily accessible. The areas are divided into three zones, and the intelligent laser system - which is always active - reacts to protect the active zone. This ensures maximum safety and means fewer manual acknowledgements are required.





SBZ 155 / MACHINING CENTRES

LAYOUT



| SBZ 155 | 8,1 m | 11,7 m |
|------------------------------|--------------|---------------|
| Total length (A) (mm) | 13.620 | 17.230 |
| Depth (B) (mm) | 4.510 | 4.510 |
| Height (mm) | 3.500 | 3.500 |
| Weight (with 12 clamps) (kg) | ~ 9.810 | ~ 11.705 |

The overall dimensions and the weight may vary depending on the product configuration

AXIS STROKES

| | |
|-------------|---------------|
| X AXIS (mm) | 8.100; 11.700 |
| Y AXIS (mm) | 1.150 |
| Z AXIS (mm) | 715 |
| A AXIS | -2° / +95° |
| C AXIS | -275° / +95° |

POSITIONING ACCURACY

| | |
|-------------|----------|
| X AXIS (mm) | +/- 0,1 |
| Y AXIS (mm) | +/- 0,1 |
| Z AXIS (mm) | +/- 0,1 |
| A AXIS | +/- 0,1° |
| C AXIS | +/- 0,1° |



POSITIONING SPEED

| | |
|----------------|-----|
| X AXIS (m/min) | 100 |
| Y AXIS (m/min) | 60 |
| Z AXIS (m/min) | 60 |
| A AXIS (°/s) | 84 |
| C AXIS (°/s) | 80 |

AXIS ACCELERATION

| | |
|----------------------------|-----|
| X AXIS (m/s ²) | 2,0 |
| Y AXIS (m/s ²) | 2,0 |
| Z AXIS (m/s ²) | 4,0 |

ELECTROSPINDLE

| | |
|--------------------------|-------------------------------------|
| Maximum power in S1 (kW) | 20 |
| Maximum speed (rpm) | 24.000 |
| Maximum torque (Nm) | 17,8 |
| Toolholder cone | HSK 63F |
| Water cooling | <input checked="" type="checkbox"/> |

OPERATING MODE

| | |
|--|-------------------------------------|
| Pendular mode with 2 lefthand materialstops | <input checked="" type="checkbox"/> |
| Cut and separation from the bar | <input checked="" type="checkbox"/> |
| Absolute encoder positioning | <input checked="" type="checkbox"/> |
| Tool length measurement and breakage control | <input type="checkbox"/> |

SAFETY DEVICES AND PROTECTION

| | |
|---|-------------------------------------|
| Access protection frontside (Light curtain / laser) | <input checked="" type="checkbox"/> |
| Side access guard (fence / protective panel) | <input checked="" type="checkbox"/> |
| Protective device rear side (fence) | <input type="checkbox"/> |

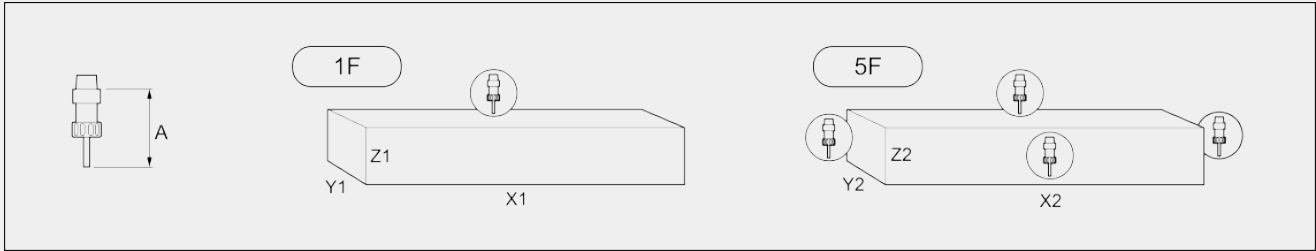


MACHINING FACES

| | |
|---|-------|
| With direct tool (front/top/back, ends) | 3 + 2 |
| With angular head (bottom) | 1 |

WORK AREA

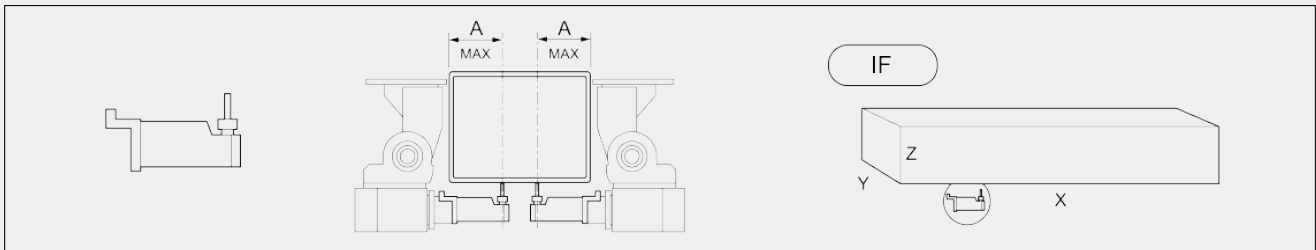
1F = 1 face machining 5F = 5 faces machining



| | | A | X1 | Y1 | Z1 | X2 | Y2 | Z2 |
|-------------------------|-------------|-----|--------|------|-----|--------|-----|-----|
| SBZ 155 - 8,1 m | single mode | 135 | 7.789 | 1000 | 380 | 7.789 | 550 | 380 |
| | double mode | 135 | 2.850 | 1000 | 380 | 2.850 | 550 | 380 |
| SBZ 155 - 11,7 m | single mode | 135 | 11.340 | 1000 | 380 | 11.340 | 550 | 380 |
| | double mode | 135 | 4.620 | 1000 | 380 | 4.620 | 550 | 380 |

Dimensions in mm

IF = Bottom face machining



| | | A | X | Y | Z |
|-------------------------|-------------|-----|--------|-----|-----|
| SBZ 155 - 8,1 m | single mode | 180 | 7.789 | 500 | 380 |
| | double mode | 180 | 2.850 | 500 | 380 |
| SBZ 155 - 11,7 m | single mode | 180 | 11.340 | 500 | 380 |
| | double mode | 180 | 4.620 | 500 | 380 |

Dimensions in mm





AUTOMATIC TOOL MAGAZINE

| | |
|---|----------------------------------|
| Tool magazine traveling along | <input checked="" type="radio"/> |
| Magazin Type: disc tool changer | <input checked="" type="radio"/> |
| Maximum number of magazine tools | 26 |
| Number of places standard tools up to D=63 mm max. | 16 |
| Number of places special tools | 10 |
| Number of places for special tools D=100 mm max. (optional) | 4 - 8 |
| Special tool 1: blade D=550 mm | <input type="radio"/> |
| Special tool 2: blade D=200 mm | <input type="radio"/> |
| Angle head | <input type="radio"/> |
| Maximum number of places for angle heads (optional) | 4 |
| Maximum disk cutter (mm) (optional) (instead of angular head 3/4) | 250 |
| Tool holder set HSK63 + collets | <input type="radio"/> |
| Maximum tool length (from taper) (mm) | 250 |
| Maximum tool weight with tool holder (kg) | 10 |

WORKPIECE LOCKING

| | |
|---|----------------------------------|
| Autonomous clamp positioning | <input checked="" type="radio"/> |
| 8.100 mm versions; standard number of clamps (max. travel) | 8 |
| 8.100 mm versions; max. number of additional clamps with max. travel | 4 |
| 11.700 mm versions; standard number of clamps (max. travel) | 10 |
| 11.700 mm versions; max. number of additional clamps with max. travel | 2 |
| Further clamps with limited travel capacity | <input type="radio"/> |

SWarf AND WASTE CONVEYOR

| | |
|---|-----------------------|
| Chip conveyor integrated in machine bed | <input type="radio"/> |
| Shavings kink conveyor | <input type="radio"/> |

SUCTION

| | |
|-----------------|-----------------------|
| Fume extraction | <input type="radio"/> |
|-----------------|-----------------------|



PNEUMATIC CONNECTION

| | |
|---|-------|
| Pressure (bar) | 6 - 7 |
| Max. air consumption (at 6 bar) (l/min) | 500 |
| Max. air consumption (at 7 bar) (l/min) | 750 |

CONTROL UNIT

| | |
|--------------------------------------|-------------------------------------|
| Microsoft® Windows® 10 Embedded | <input checked="" type="checkbox"/> |
| Panel-PC 21,6" Processor i7 | <input checked="" type="checkbox"/> |
| Hand control | <input checked="" type="checkbox"/> |
| USB ports and network connection | <input checked="" type="checkbox"/> |
| Barcode reader | <input type="checkbox"/> |
| Label printer | <input type="checkbox"/> |
| Online Assistance | <input checked="" type="checkbox"/> |
| USV for safe shutdown of the machine | <input checked="" type="checkbox"/> |

SOFTWARE

| | |
|--------------|-------------------------------------|
| eluCam Modul | <input checked="" type="checkbox"/> |
|--------------|-------------------------------------|

Included ● Available ○