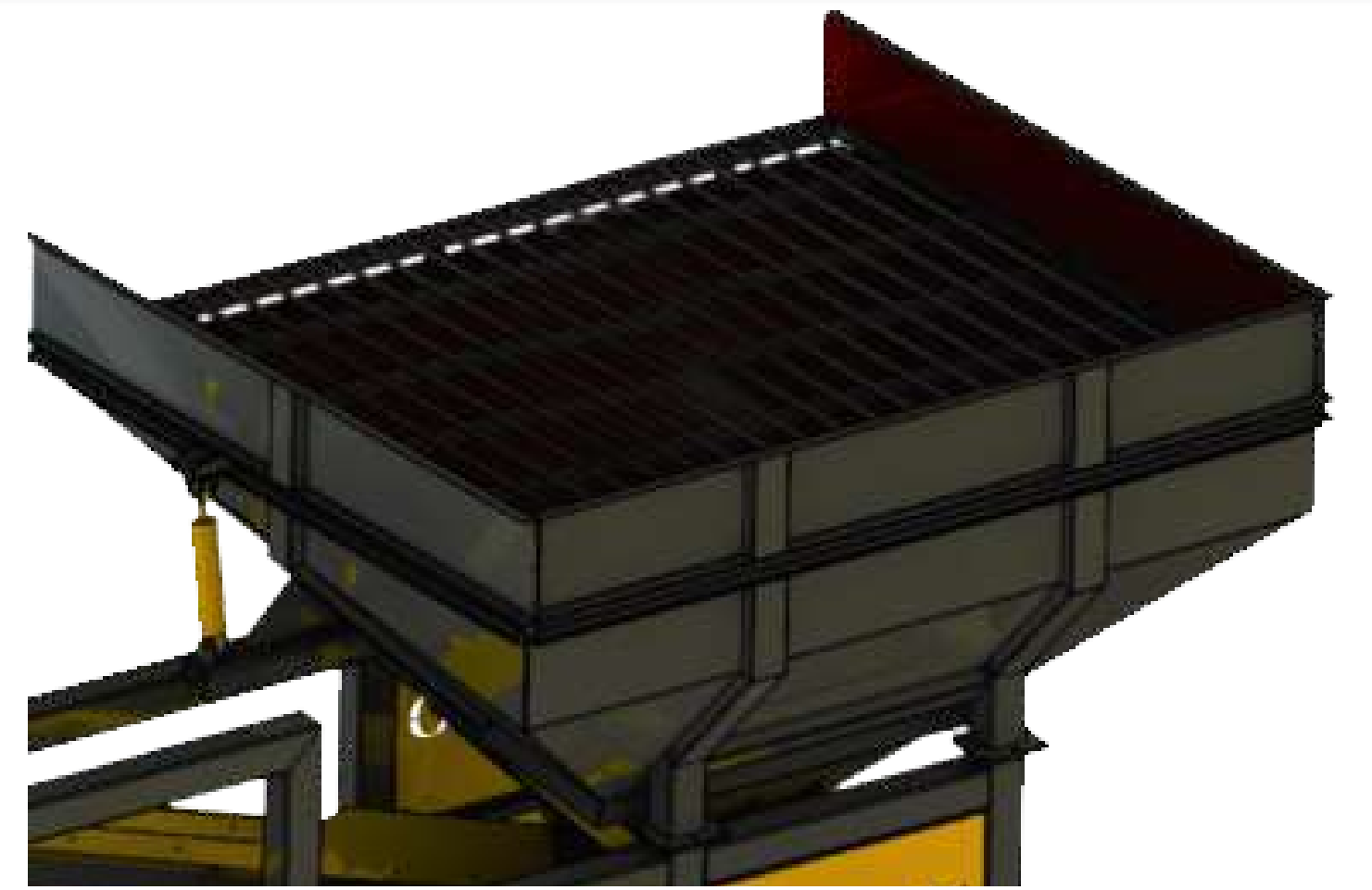


MEY-1230 MOBILE SCREENING & WASHING PLANT

- CAPACITY: 120-200 T/H
- TOTAL MOTOR POWER: 53 KW
- FEEDING SIZE: THE FRACTIONS OF THE FINAL PRODUCT MAY BE DECLARED IN ADVANCE BY THE BUYER.
- FRACTIONS TO BE RECEIVED: 3 DIFFERENT SIZES CAN BE RECEIVED
- ELECTRICAL PARTS: SIEMENS OR SCHNEIDER

FEEDING
BUNKER



DURABLE
CHASSIS
BODY
PRODUCTION



BRAKE
AXLE
SYSTEM





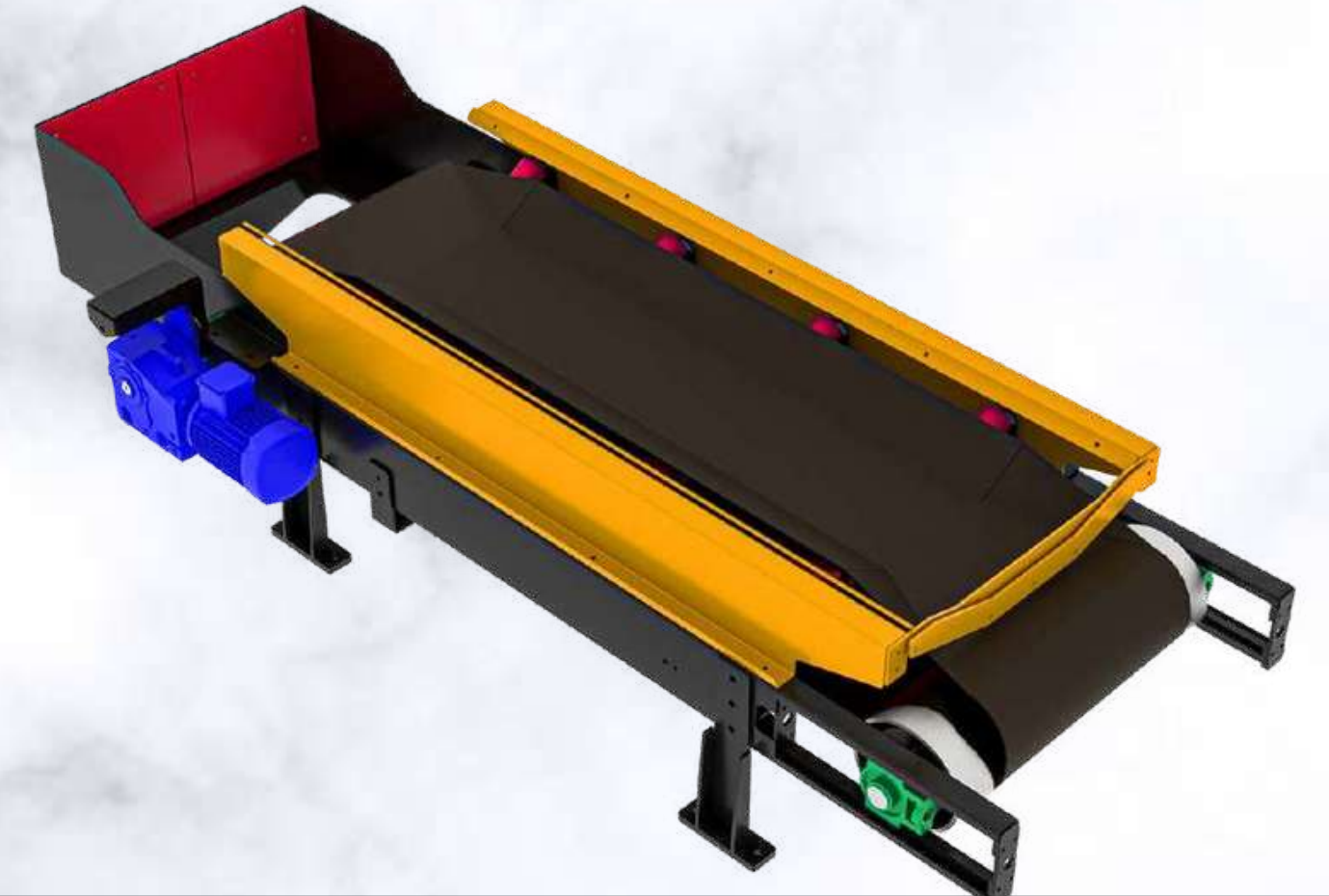
VIBRATING FEEDING BUNKER

- MODEL : KBB-7
- BUNKER VOLUME : 7 M3
- SIDE BODY SUPPLEMENTS : 5mm ST-37
- BODY SHEET: 15 MM ST-37
- BUNKER; CAN BE FEED BY EXCAVATOR, LOADER AND TRUCK.
- BUNKER HAS WALKING, CONTROL, MAINTENANCE PLATFORM.
- THERE ARE PROTECTION ENCLOSURES SUITABLE FOR OCCUPATIONAL SAFETY.
- VERY USEFUL FEEDING STRUCTURE

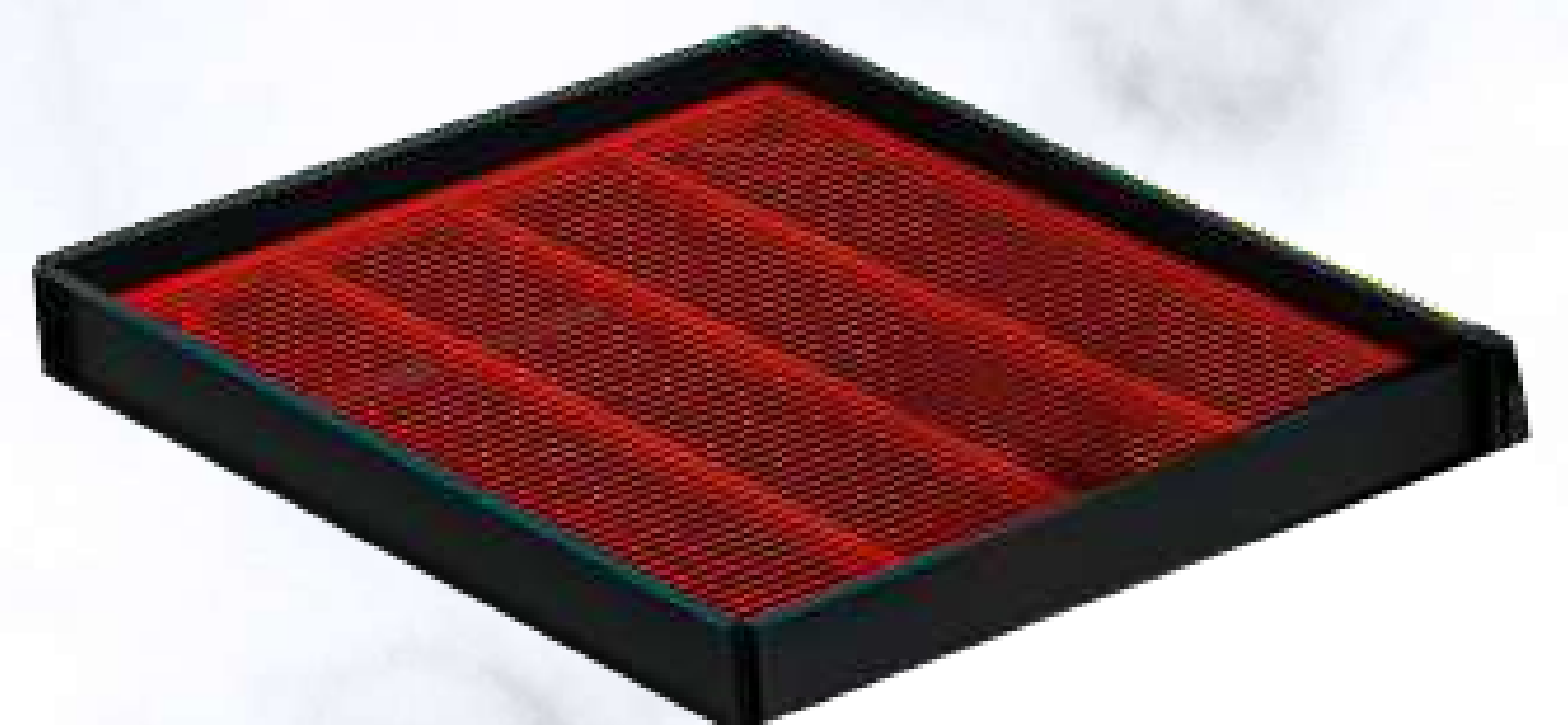
VIBRO MOTOR



SCREEN TRANSFER BELT



GRIZZLY SYSTEM





VIBRATING WASHING SCREEN

MODEL: TE-1645
MOTOR POWER: 15 KW GAMAK – EMTAŞ OR EQUIVALENT BRAND
SPEED: 1000 RPM
SCREEN DECKS: 3 DECKS
LENGTH: 4500 MM
WIDTH: 1600 MM
SCREEN ANGLE: 18°
SCREEN SURFACE: 7.2 M2
BEARINGS: NACHI -SKF-FAG OR EQUIVALENT BRAND.
SPRINGS: 8 PIECES SPECIAL PRODUCTION FROM STEEL

THERE IS A 10mm ST52 WEAR PLATE WHERE THE MATERIAL IS POURED
THERE ARE PROTECTION ENCLOSURES SUITABLE FOR OCCUPATIONAL SAFETY

VIBRATION
RESISTANT
BODY
STRUCTURE



WEAR
RESISTANT
SCREEN
MESHERS



DURABLE
STEEL
SPRINGS





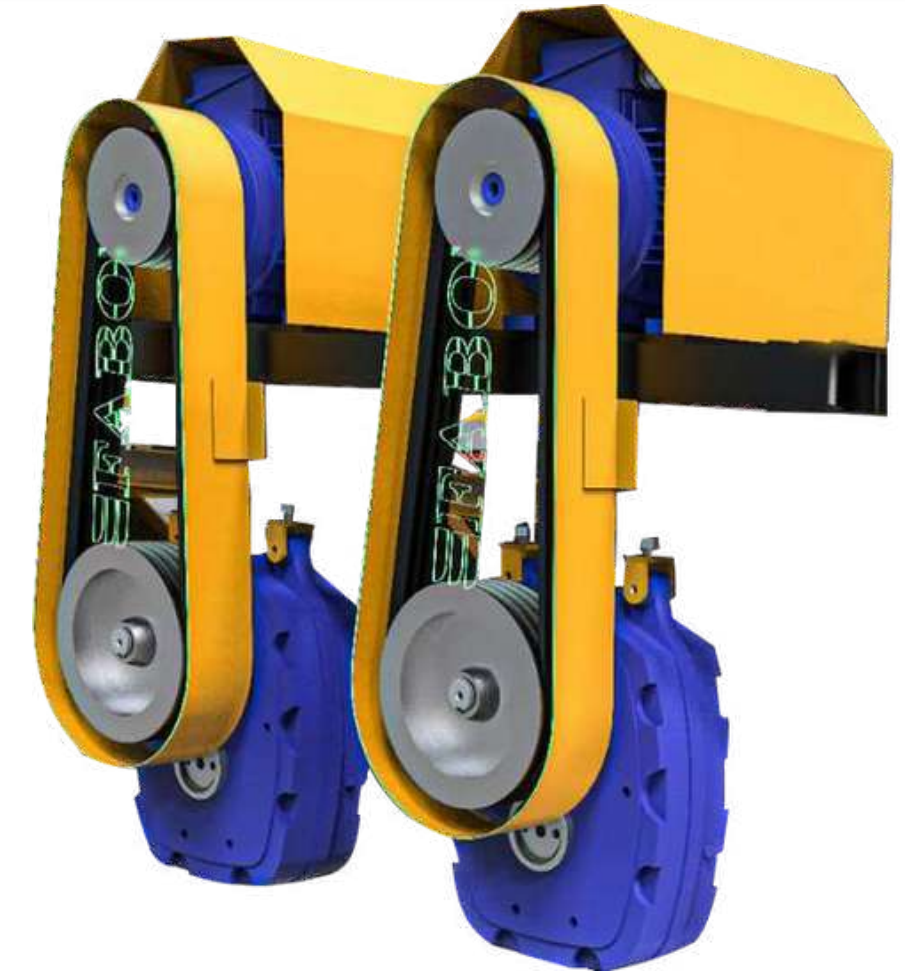
SPIRAL WASHER

- **MODEL:** HY 600 DOUBLE SPIRAL WASHER
- **SPIRAL DIMENSIONS:** Ø 600X6000 MM
- **WASHER DIMENSION:** 1400 X 6550 X 1900 MM
- **MOTOR POWER:** 2X5.5 KW
- **BODY:** ST-37 A1 QUALITY METAL SHEET
- **WATER CONSUMPTION:** 65-230 M3

-The 0-5 mm sand screened through the vibrating screen is transferred to the washing spiral. The products coming to the washing spiral begin to be washed by the rotation of 2 helix shafts moving in opposite directions.

-Helical shafts moving with 2x5.5 kW motors provide optimum washing capacity.

BELT PULLEY SYSTEM



HELIX SHAFTS



HIGH DURABLE MOTOR

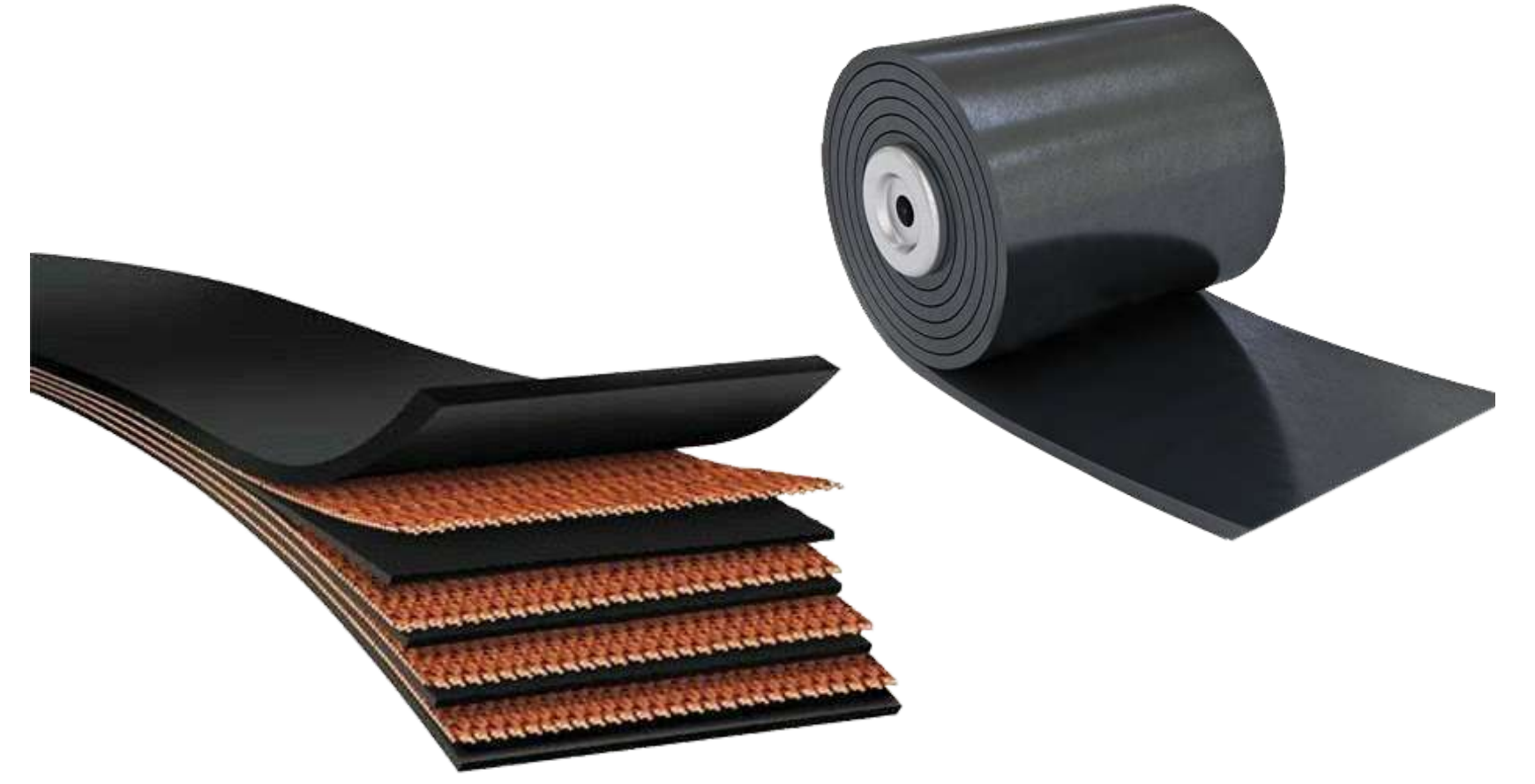




SCREEN FEEDING CONVEYOR BELT

- LENGTH: 7000 MM
- WIDTH: 800 MM
- MOTOR POWER: 5,5 KW
 - * THERE ARE DIRECTIONAL ROLLERS TO PREVENT BELT SLIPPAGE

WEAR-RESISTANT RUBBER BELT



FRONT STOCK CONVEYOR BELT

- LENGTH: 5400 MM
- WIDTH: 700 MM
- MOTOR POWER: 4 KW
 - * IT IS A FOLDING TYPE CONVEYOR BELT MODEL DURING SHIPMENT

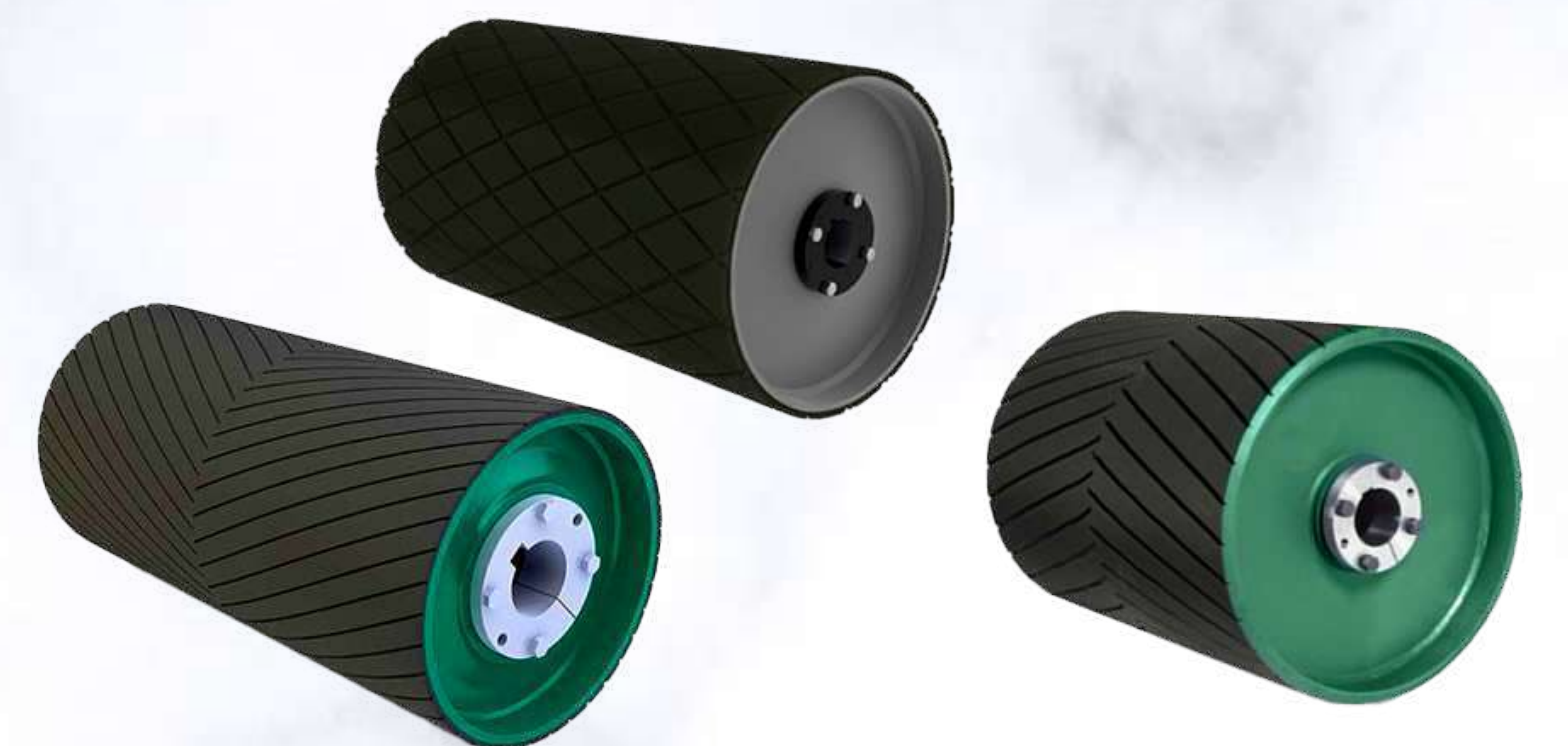
COUPLED MOTORS



SIDE STOCK CONVEYOR BELTS

- LENGTH: 500 MM
- WIDTH: 6800 MM
- MOTOR POWER: 5,5 KW
 - * IT IS A FOLDING TYPE CONVEYOR BELT MODEL DURING SHIPMENT

VULCANIZED RUBBER DRUM





MOBILE CHASSIS

- CHASSIS AND BUNKER FEET 200x200x8mm PRODUCED FROM SPECIAL PROFILE TELESCOPIC FEET 180x180x8mm/ CHASSIS FEET ARE TELESCOPIC.
- IT HAS 2 AXLES AND DRIVES WITH AIR BREAKS PARTS AND SIGNALIZATION EQUIPMENT AVAILABLE.
- SPECIAL HEAVE DUTY TYPE CONSTRUCTION CHASSIS.
- HYDRAULIC FEET MECHANISM (4 PCS). 2 INCH KING PIN WITH SPECIAL HEAT TREATMENT.
- ALL ELECTRICAL COMPONENTS SIEMENS OR AS A SCHNEIDER BRAND IT WILL BE USED, ACCORDING TO THE LIMIT LEVEL IT WILL BE USED BY SELECTING A HIGHER POWER VALUE.
- AN EMERGENCY SAFETY BUTTONS ARE AVAILABLE AT THE FRONT AND BACK OF THE PLANT.

HYDRAULIC LEGS



BRAKE AXLE SYSTEM



DURABLE CHASSIS BODY PRODUCTION

