



Easy Access for Maintenance

Easy Service Access

Our XE80E was developed with particular attention to easy service access. With a single access point for the daily maintenance of all main components, fuel level gauge, and refueling through the lockable cap.



One-sided Engine Maintenance

The XE80E is designed for lower maintenance cost with longer service intervals - resulting in more machine availability on-site. Meanwhile, skilled XCMG-trained technicians are available to provide extra support when needed.



- 1 Coolant
- 2 Air filter
- 3 Radiator
- 4 Engine postprocessor



Technical Specifications

Engine

	XE80E
Make/Model	Kubota/V3307CRTE5
No. of cylinders	4
Rated power at 2200 rpm	54.6
Max. torque at 1500 rpm	265
Idle (low - high)	1200-2000
Piston displacement	3.3L
Bore x stroke	94mm x 120mm
Starter	12V/3.0kW
Batteries - Alternator	12V/3.0kW
Air filter	Double element with automatic dust evacuation

Fluid capacities

	XE80E
Fuel tank	130L
Cooling system (radiator capacity)	14L
Hydraulic oil tank	110L
Engine oil	10L
Swing drive	0.5L
Travel device	2X1.3L

Environment

Noise levels comply with environmental regulations (dynamic values).

Noise emission

	XE80E
Noise level LwA	
Guaranteed	99
Measured	99
Operator LpA	
	72

Undercarriage

X-type undercarriage. The heavy-duty crawler chassis is very resilient with its fully welded, stress-free structure. Long service life is ensured by the use of first-class materials: hydraulic chain adjusters with shock-absorbing return springs, lifetime-lubricated track rollers and idlers.

Number of rollers and track shoes per side

	XE80E
Upper rollers (standard shoe)	1(140mm)
Lower rollers	5(140mm)
Number of links & shoes	40
Overall track length	2899mm

Hydraulic system

This XCMG design allows independent and combined operations of all functions by hydraulic piloted controlled levers.

Pump

	Type	Displacement (cm³/rev)	Max. flow @2100rpm (l/min)	Relief valve pressure (kgf/cm²)
Main(load sensing)	Load sensing pump	104.3	219	326.4

Maximum system pressure

	XE80E
Boom/arm/bucket	316
Work/travel	310
Swing	240

Swing mechanism

High-torque, axial piston motor with planetary reduction gear bathed in oil. Swing circle is single-row, shear type ball bearing with induction-hardened internal gear. Internal gear and pinion gear immersed in lubricant. Equipped with an automatic multi-disc slew brake.

Swing system

	XE80E
Max. swing speed	12 rpm
Max. swing torque	364kgf.m
Boom swing angle L/R	62/50

Drive

Each track is driven by an independent, high-torque, axial piston motor through planetary reduction gears. Two control levers provide smooth travel or counter-rotation upon demand.

Speed & traction

	XE80E
Travel speed (low - high)	2.7-4.9km/h
Maximum traction force	64kN
Gradeability	70%/35°

Digging forces (ISO 6015)

At power boost.

	XE80E
Digging force, standard arm (ISO 6015)	41kN
Digging force, bucket (ISO 6015)	64kN

Hydraulic Cylinders

	Quantity	Bore x rod diameter x stroke (mm)
boom	1	110x75x922
Arm	1	95x60x885
Bucket	1	85x55x742
Dozer	1	120x80x157
Boom swing	1	110x65x592

Weight

With 1.82 m arm and 0.35 m³ bucket

	Shoe width (mm)	Operating weight (kg)	Ground pressure (kPa)
Rubber	450	8900	39.3
Steel	450	9500	42.8

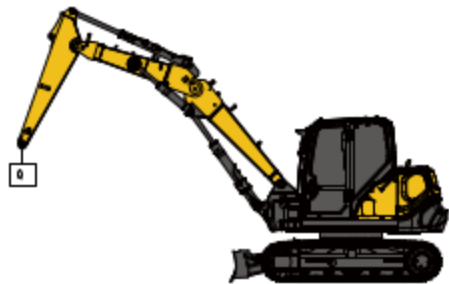


Lifting Capacities

XE80E

■ Cab • standard arm (1820 mm) • standard counterweight and additional counterweight • without bucket

Lift Point Height	Over Front							Over Side							Max Radius (Mm)
	Lift At Max Radius (kg)	1.0 m	2.0 m	3.0 m	4.0 m	5.0 m	6.0 m	Lift At Max Radius (kg)	1.0 m	2.0 m	3.0 m	4.0 m	5.0 m	6.0 m	
6m	1768			3436	2410			1424			3167	1985			4000
5m	1333			2712	2471	1722		1075			2712	1991	1395		5000
4m	1136				2406	1697	1268	914			1928	1371	1024		6000
3m	1034					1639	1247	829				1316	1004		6000
2m	987					1570	1214	789				1231	973		6000
1m	980					1513	1183	783				1196	943		6000
0m	1016					1480	1164	811				1163	923		6000
-1m	1077				2009	1474	1166	883				1356	1160	927	6000
-2m	688				1639	1293		688				1386	1182		5000

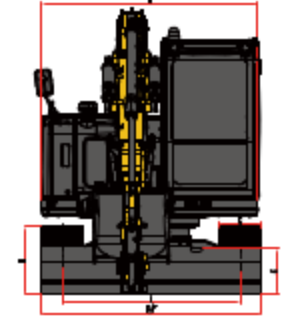
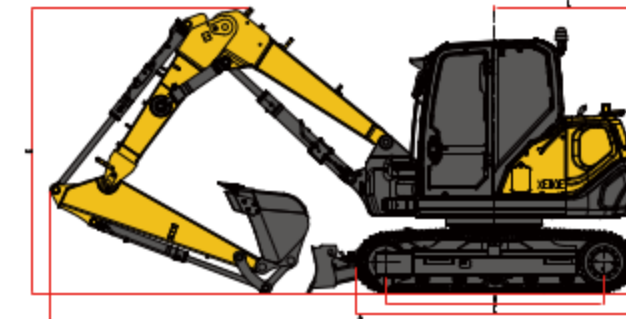
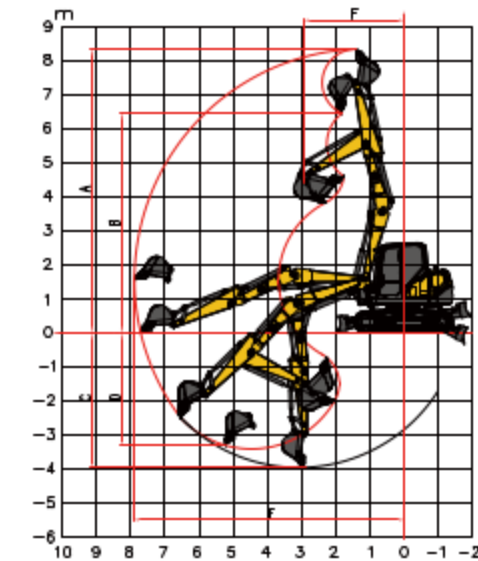


📏 : Over front
📏 : Over side or 360°

1. The lifting capacity is based on the ISO10567 standard.
2. * = The maximum lifting capacity is limited by the hydraulic capacity of the machine.
3. The lifting capacity does not exceed 87 % of the hydraulic capacity or 75 % of the tipping load with the machine on level and firm ground.
4. The operator should be familiar with the machines operating- and maintenance manual. Local regulations concerning the safe operation of machinery must be followed at all times.
5. The lift diagrams only covers machines that are originally built by XCMG: without lifting chains and any other lifting equipment.
6. When the excavator is used to lift or handle materials, it must comply with local regulations and be equipped with the necessary hose burst valves and an overload warning device complying with EN474-5.



Dimensions & Working Range



Working range

	XE80E
A	Max. digging height
B	Max. dumping height
C	Max. digging depth
D	Max. vertical wall digging depth
E	Max. digging reach
F	Min. swing radius

Dimensions

	XE80E
A	Overall length
B	Overall width
C	Overall height
D	D Width of platform
E	E Length of crawler
F	Overall width of chassis
G	Width of crawler
H	Track length on ground
I	Crawler gauge
J	Clearance under counterweight
K	Min. ground clearance
L	Min. tail swing radius
M	Height of track

Standard and optional equipment

Engine

Kubota Engine V3307, EU Stage V, EGR, DPF

Hydraulic system

Single or dual way pipeline (AUX1)
Dual way pipeline (AUX2)
Third oil return pipeline
Hydraulic quick coupler line
Fingertip proportional control

Cab & interior

TOPS/ROPS
OPG
Mechanical suspension seat
Wear-resistant textile suspension seat with retractable belt
Air conditioning
Color LCD monitor
AM/FM radio with Bluetooth
DAB radio with Bluetooth

Safety

Boom, arm and dozer cylinder safety valves
Travel alarm
Rotating beacon
Engine overheat warning and restart prevention system
Quick coupler switch with alarm
Emergency stop switch
Front and top cab protection
LED work lights (2 on cab-front, 1 on cab-rear, 2 on boom)
Rear camera

Undercarriage

Fixed undercarriage
Dozer blade
Tie down bracket
Rubber tracks 450 mm
Steel tracks 450 mm
Track rubber block

Other

Standard arm 1820 mm
General purpose bucket 0.35 m³
Quick coupler, attachments such as hammer, clamshell

Standard: ●
Optional: ○

Some of this standard or optional equipment may not be available for certain markets.
Pictures may include attachments and optional equipment that are not available in your area.
Materials and specifications are subject to change without advance notice.
Please contact your local XCMG dealer for more information on availability or to customize your machine to suit your applications requirements.