

Cassette

AUXG18KRLB / AOYG18KBTB
AUXG22KRLB / AOYG22KBTB
AUXG24KRLB / AOYG24KBTB
AUXG30KRLB / AOYG30KBTB
AUXG36KRLB / AOYG36KBTB
AUXG45KRLB / AOYG45KBTB
AUXG54KRLB / AOYG54KBTB



AUXG18/22/24KRLB

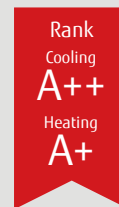


AUXG30/36/45/54KRLB



High efficiency and unique circular flow design

Cassette type realizes Circular Flow to deliver a large airflow in 360° direction by mounting high performance DC fan motor, turbo fan and unique seamless airflow louvre design.



SEER

7.00

(18/22 models)

SCOP

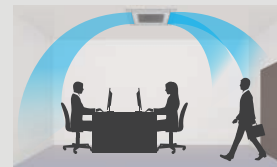
4.40

(22 model)

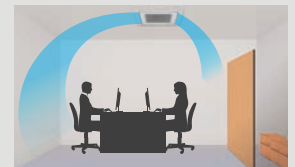
Individual louvre control

Each louvre can be set individually by Touch Panel Wired Remote Controller to enjoy the comfort of different directional airflows according to various room layouts.

*Touch Panel Wired RC (UTY-RNRYZ2&3) only



Comfortable air conditioning by preventing direct blowing of cold air and by providing swinging air flow simultaneously.



Efficient air conditioning based on the room layout

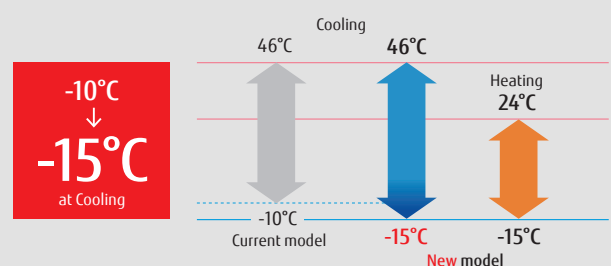


Compact and lightweight outdoor unit

Easier range installation by use of compact and lightweight outdoor unit.



Low ambient operation



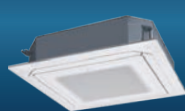
Cassette grille + Controller



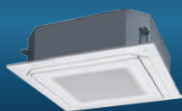
UTG-UKYA-W
White Color Grille
With touch panel wired remote controller



Model: AUXG18KRLB / AUXG22KRLB / AUXG24KRLB / AUXG30KRLB / AUXG36KRLB / AUXG45KRLB / AUXG54KRLB AOYG18KBTB / AOYG22KBTB / AOYG24KBTB / AOYG30KBTB / AOYG36KBTB / AOYG45KBTB / AOYG54KBTB



AUXG18/22/24KRLB



AUXG30/36/45/54KRLB



AOYG18/22KBTB



AOYG24KBTB



AOYG30/36KBTB



AOYG45/54KBTB

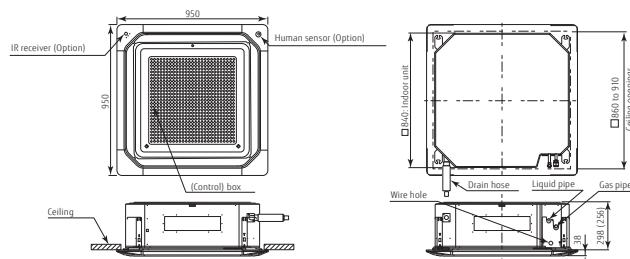
Optional parts

Wired Remote Controller:	UTY-RNRYZ3, UTY-RVNYM,
Simple Remote Controller:	UTY-RSRY, UTY-RSNYM
IR Receiver Kit:	UTY-LBTYC
Wireless LAN Interface:	UTY-TFSXZ1
Human Sensor Kit:	UTY-SHZXC
Cassette Grille:	UTG-UKYA-W, UTG-UKYC-W, UTG-UKYA-B
Wide Panel:	UTG-AKXA-W
Fresh Air Intake Kit:	UTZ-VXRA
Insulation Kit for High Humidity:	UTZ-KXRA
External Input and Output PCB (with box):	UTY-XCSX + UTZ-GXRA
External Connect Kit:	UTY-XWZXZG

Dimensions

Indoor unit : AUXG18/22/24/30/36/45/54KRLB

(Unit : mm)



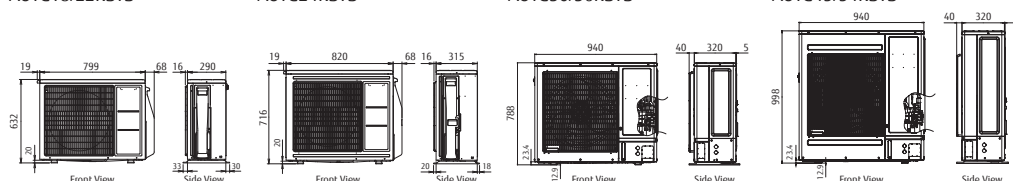
() : AUXG18/22/24KRLB

Outdoor unit :
AOYG18/22KBTB

AOYG24KBTB

AOYG30/36KBTB

AOYG45/54KBTB



Model No.	Indoor unit		AUXG18KRLB	AUXG22KRLB	AUXG24KRLB	AUXG30KRLB	AUXG36KRLB	AUXG45KRLB	AUXG54KRLB
	Outdoor unit		AOYG18KBTB	AOYG22KBTB	AOYG24KBTB	AOYG30KBTB	AOYG36KBTB	AOYG45KBTB	AOYG54KBTB
Power Source			Single-phase, ~230V, 50Hz						
Capacity	Cooling	kW	5.2 (0.9-5.9)	6.0 (0.9-6.7)	6.8 (0.9-8.0)	8.5 (2.8-10.0)	9.5 (2.8-11.2)	12.1 (4.0-14.0)	13.4 (4.5-14.5)
	Heating		6.0 (0.9-7.5)	7.0 (0.9-8.0)	7.5 (0.9-9.1)	10.0 (2.7-11.2)	10.8 (2.7-12.7)	13.5 (4.2-16.2)	15.5 (4.7-16.5)
UK Total/sensible cooling			5.01/4.03	5.85/4.30	6.63/4.74	8.08/8.77	9.05/6.49	11.54/8.56	12.73/9.23
Input Power	Cooling/Heating	kW	1.36/1.58	1.71/1.82	1.89/1.90	2.44/2.51	2.91/2.45	3.61/3.21	4.41/4.16
EER	Cooling	W/W	3.82	3.51	3.60	3.49	3.26	3.35	3.04
COP	Heating		3.80	3.85	3.95	3.98	4.40	4.20	3.73
Pdesign	Cooling/Heating (-10°C)	kW	5.2/4.4	6.0/4.8	6.8/6.0	8.5/8.0	9.5/8.7	-	-
SEER	Cooling	W/W	7.00	7.00	6.60	6.70	6.55	-	-
SCOP	Heating (Average)		4.30	4.40	4.20	4.30	4.30	-	-
Energy Efficiency Class	Cooling		A++	A++	A++	A++	A++	-	-
	Heating (Average)		A+	A+	A+	A+	A+	-	-
Annual Energy Consumption	Cooling	kWh/a	260	300	360	444	507	-	-
	Heating		1,431	1,527	1,999	2,601	2,828	-	-
Moisture Removal		l/h	1.5	2.2	2.7	2.5	3.3	4.5	5.0
Sound Pressure Level	Indoor (Cooling)	H/M/L/Q	33/32/31/28	33/32/31/28	35/33/32/29	40/38/36/33	44/41/38/34	46/42/39/35	47/43/40/36
	Indoor (Heating)	H/M/L/Q	33/32/31/28	33/32/31/28	35/33/32/29	40/38/36/33	44/41/38/34	46/42/39/35	47/43/40/36
	Outdoor (Cooling/Heating)	High	50/50	51/51	53/54	53/55	55/55	57/57	57/59
Sound Power Level	Indoor (Cooling/Heating)	High	47/47	49/49	49/49	54/54	58/58	60/60	61/61
	Outdoor (Cooling/Heating)	High	62/62	63/63	65/66	68/69	70/70	71/71	73/73
Airflow Rate	Indoor / Outdoor (Cooling)	High	1,050/2,160	1,050/2,240	1,150/2,700	1,600/3,750	1,870/3,750	2,000/4,450	2,100/4,450
	Indoor / Outdoor (Heating)	High	1,050/1,830	1,050/1,960	1,150/2,700	1,600/3,750	1,870/3,750	2,000/4,450	2,100/4,450
Net Dimensions	Indoor	mm	246x840x840	246x840x840	246x840x840	288x840x840	288x840x840	288x840x840	288x840x840
	Outdoor	mm	632x799x290	632x799x290	716x820x315	788x940x320	788x940x320	998x940x320	998x940x320
Weight	Indoor	kg(lbs)	23 (51)	23 (51)	24 (53)	26 (57)	29 (64)	29 (64)	29 (64)
	Outdoor	kg(lbs)	36 (79)	38 (84)	42 (93)	52 (115)	52 (115)	67 (148)	67 (148)
Remote Controller Type			Touch Panel Hard Wired Controller (Included with Grille)						
Interconnecting Cable (Suggested cable size 1.5mm)			3 Core + Earth						
Suggested MCB Size		Amp	16	16	16	25	25	30	30
Max. Operating Current	Cooling/Heating	A	12.1	12.6	13.6	22.6	22.6	28.5	28.5
Power Supply To			Outdoor						
Connection Pipe Diameter (Gas / Liquid)		Inch	1/2 & 1/4	1/2 & 1/4	1/2 & 1/4	5/8 & 3/8	5/8 & 3/8	5/8 & 3/8	5/8 & 3/8
Max Pipe Length (Pre-Charge)		m	30 (20)	30 (20)	30 (20)	50 (30)	50 (30)	50 (30)	50 (30)
Max Height Difference		m	20	25	25	30	30	30	30
Operation Range	Cooling	°CDB	-15 to 46	-15 to 46	-15 to 46	-15 to 46	-15 to 46	-15 to 46	-15 to 46
	Heating		-15 to 24	-15 to 24	-15 to 24	-15 to 24	-15 to 24	-15 to 24	-15 to 24
Refrigerant	Type		R32	R32	R32	R32	R32	R32	R32
	Charge	g	1020	1250	1250	1900	1900	2700	2700
	Additional Charge	g/m	20	20	20	40	40	40	40
Cassette Grille	Model Name		UTG-UKYA-W (Wired remote controller UTY-RNRYZ3 included)						
	Dimensions (H x W x D)	mm	53x950x950	53x950x950	53x950x950	53x950x950	53x950x950	53x950x950	53x950x950
	Weight	kg	6.0	6.0	6.0	6.0	6.0	6.0	6.0

• Specifications and design are subject to change without notice for further improvement.
• Actual products' colors may be different from the colors shown in this printed material.

Distributed by :



ISO 9001
Certified number: 01 100 075229
Fujitsu General (Thailand) Co., Ltd.



ISO 9001
Certified number: 1591702007385M
Fujitsu General Central Air-conditioner (Wuxi) Co., Ltd.

FUJITSU GENERAL AIR CONDITIONING (UK) LTD
Unit 150 Centennial Park, Centennial Avenue, Elstree, Herts. WD6 3SG
www.fujitsu-general.com/uk
Tel: +44 (0)208 731 3450 Fax: +44 (0)208 731 3451

Copyright© 2018 Fujitsu General Limited. All rights reserved. 3EFNP30-1812E