



## MULTI SPLIT OUTDOOR UNITS

The Multi Split Series is the ideal solution for efficient 2, 3, 4 and 5 zone air conditioning with a single outdoor unit.

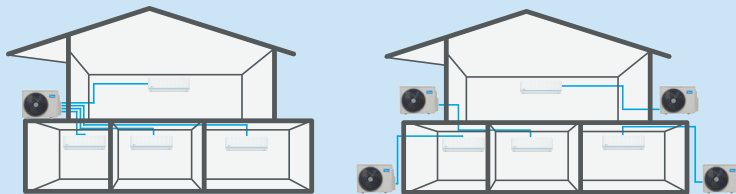
### FLEXIBLE INSTALLATION

One outdoor unit can be connected with up to 5 indoor units. Each indoor unit can be individually controlled.

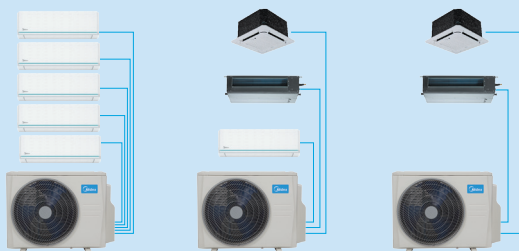
Indoor units do not need to be installed at the same time, which enables system expansion depending on the user's needs.

### DEDICATED INDOOR UNITS

The Multi Split series is the ideal solution for efficient 2, 3, 4 or 5-zone air conditioning with a single outdoor unit. On a single system it is possible to connect a range of different indoors with varying capacities. All indoor units can be individually controlled and pipe lengths of up to 80 metres can be accommodated.



Flexible installation



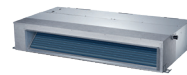
Dedicated indoor units



AG ECO - WALL MOUNTED



BREEZELESS+ - WALL MOUNTED



A6 DUCTED



CONSOLE



COMPACT ROUND-FLOW CASSETTE

#### Indoor units



#### Outdoor units



IR Controller RG10-S



IR Controller RG10-B



Wired Controller

#### Controllers



Voice Control



MSmartHome



## MULTI SPLIT OUTDOOR UNITS

OUTDOOR			M2OH-14HFN8-Q	M2OE-18HFN8-Q	M3OG-21HFN8-Q	M3OA-27HFN8-Q
Nominal Cooling Capacity (min-max)	kW		4.10 (1.39 - 4.83)	5.3 (1.4 - 6.34)	6.15 (2.142 - 6.85)	7.9 (1.58 - 8.69)
Nominal Heating Capacity (min-max)	kW		4.40 (1.65 - 4.98)	5.6 (1.54 - 6.66)	6.59 (1.80 - 6.74)	8.2 (1.58 - 8.69)
Outdoor air flow	m <sup>3</sup> /h		2100	2100	3000	3000
Outdoor sound pressure level	dB(A)		55	54	55	55
Seasonal Efficiency SEER/Class	w/w		6.8/A++	6.1/A++	6.5/A++	6.1/A++
Seasonal Efficiency SCOP/Class	w/w		4/A+	4/A+	4/A+	4/A+
Power supply (Outdoor)	V-Hz		220-240V- 50Hz, 1Ph	220-240V- 50Hz, 1Ph	220-240V- 50Hz, 1Ph	220-240V- 50Hz, 1Ph
Cooling Current (min-max)	A		5.8(1.2-7.12)	7.1(3.2-9.0)	8.3(1.8-10)	11.2(2.1-14.7)
Heating Current (min-max)	A		5.4(1.9-7.24)	6.6(2.80-7.95)	7.6(2.6-8)	10.1(2.6-13.5)
Max. Current	A		12	13	17	18
Recommended Fuse Size (Outdoor)	A		16	16	16	20
Dimensions (WxDxH)	mm		805x330x554	805x330x554	890x342x673	890x342x673
Packing (WxDxH)	mm		915x370x615	915x370x615	1030x438x750	1030x438x750
Net/Gross weight	Kg		31.6/34.7	35/38	43.3/47.1	48/51.8
Refrigerant	Type		R32	R32	R32	R32
	GWP		675	675	675	675
	Charged quantity	Kg	1.1	1.25	1.5	1.85
	Additional Charge	g/m	12	12	12	12
Refrigerant piping	Liquid side/ Gas side	mm(inch)	Ø6.35 & Ø9.52 (x2) (1/4" & 3/8" (x2))	Ø6.35 & Ø9.52 (x2) (1/4" & 3/8" (x2))	Ø6.35 & Ø9.52 (x3) (1/4" & 3/8" (x3))	Ø6.35 & Ø9.52 (x3) (1/4" & 3/8" (x3))
	Max. pipe length (All)	m	40	40	60	60
	Max. pipe length (Per indoor)	m	25	25	30	30
	Max. height indoor to outdoor	m	15	15	15	15
	Max. height between indoors	m	10	10	10	10
Thermostat type			Remote Control	Remote Control	Remote Control	Remote Control
Outdoor (Cooling/Heating)	°C		-15-50/-15-24	-15-50/-15-24	-15-50/-15-24	-15-50/-15-24

## MULTI SPLIT OUTDOOR UNITS

OUTDOOR			M4OE-28HFN8-Q	M4OB-36HFN8-Q	M5OE-42HFN8-Q
Nominal Cooling Capacity (min-max)	kW		8.20 (2.84 - 9.67)	10.6 (1.59 - 13.78)	12.3 (1.66 - 14)
Nominal Heating Capacity (min-max)	kW		8.79 (2.28 - 11.42)	11.1 (1.8 - 14.4)	12.3 (1.66 - 14.94)
Outdoor air flow	m <sup>3</sup> /h		3800	4000	3850
Outdoor sound pressure level	dB(A)		63	63	62
Seasonal Efficiency SEER/Class	w/w		7.0/A++	6.1/A++	6.5/A++
Seasonal Efficiency SCOP/Class	w/w		4/A+	4/A+	3.8/A
Power supply (Outdoor)	V-Hz		220-240V - 50Hz, 1Ph	220-240V - 50Hz, 1Ph	220-240V - 50Hz, 1Ph
Cooling Current (min-max)	A		10.9(1.3-14.5)	15.0(1.54-18.03)	18.5(6.6-20.3)
Heating Current (min-max)	A		10.4(1.98-14)	13.5(2.62-16.12)	13.5(4.8-17.8)
Max. Current	A		19	21.5	22
Recommended Fuse Size (Outdoor)	A		20	25	25
Dimensions (WxDxH)	mm		946x410x810	946x410x810	946x410x810
Packing (WxDxH)	mm		1090x500x885	1090x500x885	1090x500x885
Net/Gross weight	Kg		62.1/67.7	68.8/75.6	74.1/79.5
Refrigerant	Type		R32	R32	R32
	GWP		675	675	675
	Charged quantity	Kg	2.1	2.1	2.9
	Additional Charge	g/m	12	12 / 24	12 / 24
Refrigerant piping	Liquid side/ Gas side	mm(inch)	Ø6.35 & Ø9.52 (x4) (1/4" & 3/8" (x4))	Ø6.35 (x4) & Ø9.52 (x3) & Ø12.7(x1) (1/4" (x4) & 3/8" (x3) & 1/2" (x1))	Ø6.35 (x5) & Ø9.52 (x4) & Ø12.7(x1) (1/4" (x5) & 3/8" (x4) & 1/2" (x1))
	Max. pipe length (All)	m	80	80	80
	Max. pipe length (Per indoor)	m	35	35	35
	Max. height indoor to outdoor	m	15	15	15
	Max. height between indoors	m	10	10	10
Thermostat type			Remote Control	Remote Control	Remote Control
Outdoor (Cooling/Heating)	°C		-15-50/-15-24	-15-50/-15-24	-15-50/-15-24

Nominal Conditions: Cooling; indoor 27°C DB, 19°C WB, outdoor 35°C DB, 24°C WB.  
Nominal Conditions: Heating; indoor 20°C DB, outdoor 7°C DB, 6°C WB.

UK Conditions: Summer: indoor 21°C DB, 15°C WB, outdoor 27°C DB.  
Sound Pressure is measured 1.5m below the air-outlet at Nominal Conditions.

## MULTI SPLIT INDOOR UNITS

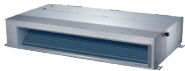


**AG ECO - WALL MOUNTED**



IR Controller RG10-S (included)

INDOOR			AG2Eco-09NXD0-I(U)	AG2Eco-12NXD0-I(U)	AG2Eco-18NXD0-I(U)	AG2Eco-24NXD0-I(U)
Nominal Cooling Capacity (min-max)		kW	2.64 (1.02 - 3.22)	3.51 (1.37 - 4.30)	5.27 (3.39 - 5.89)	7.03 (2.11 - 8.20)
Nominal Heating Capacity (min-max)		kW	2.93 (0.82 - 3.37)	3.80 (1.69 - 4.38)	5.56 (3.10 - 5.84)	7.32 (1.55 - 8.20)
UK Total Cooling Capacity		kW	3.06	4.08	5.59	7.79
Interconnecting Wiring		No.	4 Core 1.5mm	4 Core 1.5mm	4 Core 1.5mm	4 Core 1.5mm
Power Supply		V-Hz-Ph	Via Outdoor	Via Outdoor	Via Outdoor	Via Outdoor
Indoor air flow (Hi/Mi/Lo)		m <sup>3</sup> /h	520/460/330	530/400/350	800/600/500	1090/770/610
Indoor sound pressure level (Hi/Mi/Lo/Si)		dB(A)	37/32/22/20	37/32/22/21	41/37/31/20	46/37/34.5/21
Dimensions (WxDxH)		mm	726x210x291	835x208x295	969x241x320	1083x244x336
Packing (WxDxH)		mm	790x270x375	905x290x355	1045x315x405	1155x315x415
Net/Gross weight		Kg	8/10.5	8.7/11.5	11.2/14.6	13.6/17.3
Thermostat type			Remote Control	Remote Control	Remote Control	Remote Control
Refrigerant piping	Liquid side/Gas side	mm(inch)	Ø6.35/Ø9.52(1/4"/3/8")	Ø6.35/Ø9.52(1/4"/3/8")	Ø6.35/Ø12.7(1/4"/1/2")	Ø9.52/Ø15.9(3/8"/5/8")
Indoor (Cooling/Heating)		°C	16-32/0-30	16-32/0-30	16-32/0-30	16-32/0-30



**A6 DUCTED**



IR Controller RG10-S (included)



Wired Controller KJR-120X (included)

INDOOR			MTIU-09HWFNX(GA)	MTIU-12HWFNX(GA)	MTIU-18HWFNX(GA)
Nominal Cooling Capacity (min-max)		kW	2.6(1.03 - 3.2)	3.52(0.53-3.99)	5.28(2.55-5.86)
Nominal Heating Capacity (min-max)		kW	3.0(0.82 - 3.4)	3.81(1.00-4.39)	5.57(2.20-6.15)
UK Total Cooling Capacity		kW	3.06	3.79	5.56
Power Supply		V-Hz-Ph	Via Outdoor	Via Outdoor	Via Outdoor
Interconnecting Wiring		No.	4 Core 1.5mm	4 Core 1.5mm	4 Core 1.5mm
External Static Pressure		Pa	0-40	0-60	0-100
Indoor air flow (Hi/Mi/Lo)		m <sup>3</sup> /h	500/340/230	600/480/300	880/650/350
Indoor sound pressure level (Hi/Mi/Lo)		dB(A)	40/34.5/27.5	34.5/30.5/29/23	41/38/34/26
Dimensions (WxDxH)		mm	700x506x200	700x506x200	880x674x210
Packing (WxDxH)		mm	860x540x285	860x540x285	1070x725x280
Net/Gross weight		Kg	17.8/21.5	17.8/21.5	24.4/29.6
Thermostat type			Remote Control	Remote Control	Remote Control
Refrigerant piping	Liquid side/Gas side	mm(inch)	Ø6.35/Ø9.52(1/4"/3/8")	Ø6.35/Ø9.52(1/4"/3/8")	Ø6.35/Ø12.7(1/4"/1/2")
Indoor (Cooling/Heating)		°C	16-32/0-30	16-32/0-30	16-32/0-30



**COMPACT ROUNDFLOW CASSETTE**



IR Controller RG10-S (included)



Wired Controller KJR-120X2 (included)

INDOOR			MCA3U-09HRFNX(GA)	MCA3U-12HRFNX(GA)	MCA3U-18HRFNX(GA)
Nominal Cooling Capacity (min-max)		kW	2.6(1.03 - 3.2)	3.52(0.85-4.11)	5.28(2.90-5.59)
Nominal Heating Capacity (min-max)		kW	3.0(0.82 - 3.4)	3.81(0.47-4.31)	5.57(2.37-6.10)
UK Total Cooling Capacity		kW	3.06	3.9	5.3
Power Supply		V-Hz-Ph	Via Outdoor	Via Outdoor	Via Outdoor
Interconnecting Wiring		No.	4 Core 1.5mm	4 Core 1.5mm	4 Core 1.5mm
Indoor air flow (Hi/Mi/Lo)		m <sup>3</sup> /h	540/500/460	620/510/420	720/620/500
Indoor sound pressure level (Hi/Mi/Lo)		dB(A)	39/37/35	41/36/33/25.5	43/39.5/35.5/29
Dimensions (WxDxH) (body)		mm	570x570x260	570x570x260	570x570x260
Packing (WxDxH) (body)		mm	675x640x295	662x662x317	662x662x317
Net/Gross weight (body)		Kg	14.5/17.3	16.3/20.4	16/20.6
Dimensions (WxDxH) (panel)		mm	647x647x50	647x647x50	647x647x50
Packing (WxDxH) (panel)		mm	715x715x123	715x715x123	715x715x123
Net/Gross weight (panel)		Kg	14.5/17.5	2.5/4.5	2.5/4.5
Thermostat type			Remote Control	Remote Control	Remote Control
Refrigerant piping	Liquid side/Gas side	mm(inch)	Ø6.35/Ø9.52(1/4"/3/8")	Ø6.35/Ø9.52(1/4"/3/8")	Ø6.35/Ø12.7(1/4"/1/2")
Indoor (Cooling/Heating)		°C	16-32/0-30	16-32/0-30	16-32/0-30

## MULTI SPLIT INDOOR UNITS



**BREEZELESS+ - WALL MOUNTED**



IR Controller RG10-B (included)

INDOOR			MSFAAU-09HRFN8	MSFAAU-12HRFN8
Nominal Cooling Capacity (min-max)		kW	2.64(0.85 - 3.28)	3.52(1.31- 4.37)
Nominal Heating Capacity (min-max)		kW	2.93(.79 - 3.37)	3.81(0.88 - 4.54)
UK Total Cooling Capacity		kW	3.17	4.15
Power Supply		V-Hz-Ph	4 Core 1.5mm	4 Core 1.5mm
Interconnecting Wiring		No.	Via Outdoor	Via Outdoor
Indoor air flow (Hi/Mi/Lo)		m <sup>3</sup> /h	610/500/380	640/520/400
Indoor sound pressure level (Hi/Mi/Lo)		dB(A)	38/35/21/19	39/36/21/20
Dimensions (WxDxH)		mm	940x193x325	940x193x325
Packing (WxDxH)		mm	1055x385x290	1055x385x290
Net/Gross weight		Kg	10.7/13.8	10.7/13.8
Thermostat type			Remote Control	Remote Control
Refrigerant piping	Liquid side/Gas side	mm(inch)	Ø6.35/Ø9.52(1/4"/3/8")	Ø6.35/Ø9.52(1/4"/3/8")
Indoor (Cooling/Heating)		°C	16-32/0-30	16-32/0-30



**CONSOLE**



IR Controller RG10-S (included)

INDOOR			MFA2U-12HRFNX(GA)	MFA2U-17HRFNX(GA)
Nominal Cooling Capacity (min-max)		kW	3.52(0.76-4.25)	4.98(2.64-5.57)
Nominal Heating Capacity (min-max)		kW	3.81(0.45-4.69)	5.28(2.20-6.30)
UK Total Cooling Capacity		kW	3.82	5.01
Power Supply		V-Hz-Ph	Via Outdoor	Via Outdoor
Interconnecting Wiring		No.	4 Core 1.5mm	4 Core 1.5mm
Indoor air flow (Hi/Mi/Lo)		m <sup>3</sup> /h	650/580/490	780/690/600
Indoor sound pressure level (Hi/Mi/Lo)		dB(A)	37/34/27	41/38/32
Dimensions (WxDxH)		mm	794x200x621	794x200x621
Packing (WxDxH)		mm	865x280x719	865x280x719
Net/Gross weight		Kg	14.9/18.8	14.9/18.8
Thermostat type			Remote Control	Remote Control
Refrigerant piping	Liquid side/Gas side	mm(inch)	Ø6.35/Ø9.52(1/4"/3/8")	Ø6.35/Ø12.7(1/4"/1/2")
Indoor (Cooling/Heating)		°C	16-32/0-30	16-32/0-30

## COMBINATION TABLES

**M2OH-14HFN8-Q**

ONE UNIT	TWO UNIT
9	9+9
12	
17	
18	

**M2OE-18HFN8-Q**

ONE UNIT	TWO UNIT
9	9+9
12	9+12
17	12+12
18	

**M3OG-21HFN8-Q**

ONE UNIT	TWO UNIT	THREE UNIT
9	9+9	9+9+9
12	9+12	
17	9+17	
18	9+18	
	12+12	

**M3OA-27HFN8-Q**

ONE UNIT	TWO UNIT		THREE UNIT
9	9+9	12+12	9+9+9
12	9+12	12+17	9+9+12
17	9+17	12+18	9+12+12
18	9+18		

**M4OE-28HFN8-Q**

ONE UNIT	TWO UNIT		THREE UNIT	FOUR UNIT
9	9+9	12+17	9+9+9	9+9+9+9
12	9+12	12+18	9+9+12	
17	9+17	12+24	9+9+17	
18	9+18	17+17	9+9+18	
24	9+24	17+18	9+12+12	
	12+12	18+18	12+12+12	

**M4O-36FN8-Q**

ONE UNIT	TWO UNIT		THREE UNIT		FOUR UNIT	
9	9+9	12+12	9+9+9	9+12+24	9+9+9+9	9+9+12+12
12	9+12	12+17	9+9+12	9+17+17	9+9+9+12	9+9+12+17
17	9+17	12+18	9+9+17	9+17+18	9+9+9+17	9+9+12+18
18	9+18	12+24	9+9+18	9+18+18	9+9+9+18	9+12+12+12
24	9+24	17+18	9+9+24	12+12+12		
		18+18	9+12+12	12+12+17		
			9+12+17	12+12+18		
			9+12+18			

**M5OE-42HFN8-Q**

ONE UNIT	TWO UNIT		THREE UNIT		FOUR UNIT		FIVE UNIT
9	9+9	12+12	9+9+9	9+12+18	9+9+9+9	9+9+12+24	9+9+9+9+9
12	9+12	12+18	9+9+12	9+18+18	9+9+9+12	9+12+12+12	9+9+9+9+12
17	9+18	12+24	9+9+17	12+12+12	9+9+9+18	9+12+12+17	9+9+9+9+17
18	17+24	17+17	9+9+18	12+12+17	9+9+9+24	9+12+12+18	9+9+9+9+18
24	9+24	17+18	9+9+24	12+17+17	9+9+12+12	12+12+12+12	9+9+9+12+12
		18+18	9+12+12	12+17+18	9+9+12+18	12+12+12+17	9+9+12+12+12
			9+12+24	12+12+18		12+12+12+18	
			9+12+17	12+18+18			
			9+17+17	12+12+24			
			9+17+18				

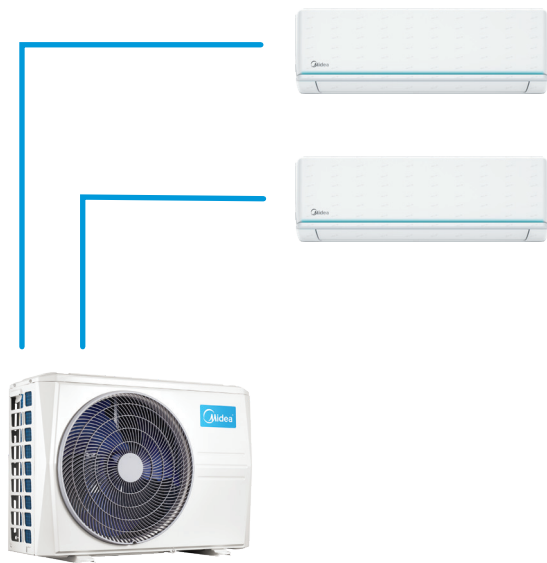
## MULTI SPLIT SYSTEMS

- Full flexibility with mix & match combinations - mix unit type & capacity
- Control each unit individually
- Up to 130% diversity
- Up to 80 metres total pipework

### M2 - UP TO 2 INDOORS

Cooling: 4.1 kW to 6.34 kW

Heating: 4.4 kW to 6.66 kW



- Up to 5 zones from a single outdoor unit
- Indoor capacity from: cooling 2.6 kW to 8.25 kW / heating 3 kW to 8.53 kW
- Wi-Fi control standard with AG Eco and Breezeless wall mounted / optional for ducted and compact cassette

### M3 - UP TO 3 INDOORS

Cooling: 6.15 kW to 8.69 kW

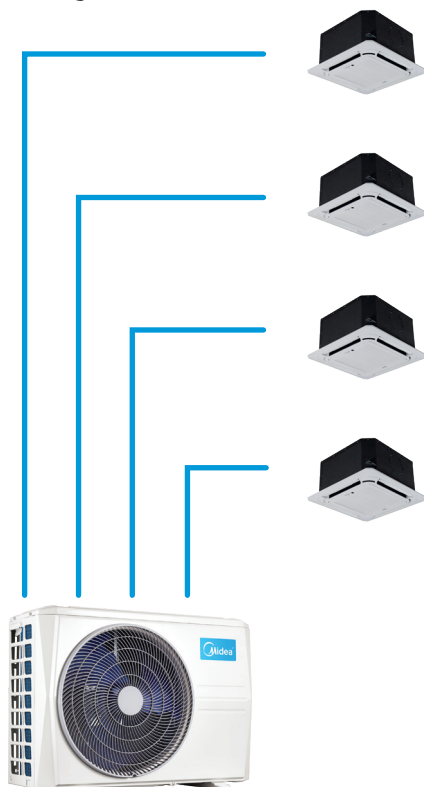
Heating: 6.59 kW to 8.69 kW



### M4 - UP TO 4 INDOORS

Cooling: 8.2 kW to 13.78 kW

Heating: 8.79 kW to 14.4 kW



### M5 - UP TO 5 INDOORS

Cooling: 12.3 kW to 14 kW

Heating: 12.3 kW to 14.94 kW



## MULTI SPLIT QUICK REFERENCE GUIDE

TYPE	CODE	COOLING kW (Min-Max)	HEATING kW (Min-Max)	PIPE SIZES	MAX PIPE LENGTH (M)	MAX PIPE HEIGHT (M)
<b>OUTDOOR UNITS</b>						
	14	4.10(1.39-4.83)	4.40(1.65-4.98)	1/4" & 3/8" (x2)	40	10
	18	5.3(1.4-6.34)	5.6(1.54-6.66)	1/4" & 3/8" (x2)	40	10
	21	6.15(2.142-6.85)	6.59(1.80-6.74)	1/4" & 3/8" (x3)	60	10
	27	7.9(1.58-8.69)	8.2 (1.58-8.69)	1/4" & 3/8" (x3)	60	10
	28	8.20(2.84-9.67)	8.79(2.28-11.42)	1/4" & 3/8" (x4)	80	10
	36	10.6(1.59-13.78)	11.1(1.8-14.4)	1/4" (x4) & 3/8" (x3) & 1/2" (x1)	80	10
	42	12.3(1.66-14)	12.3(1.66-14.94)	1/4" (x5) & 3/8" (x4) & 1/2" (x1)	80	10
<b>AG ECO WALL MOUNTED</b>						
<b>AGECO</b>						
	9	2.64 (1.02 - 3.22)	2.93 (0.82 - 3.37)	1/4" & 3/8"	25-35*	10
	12	3.51 (1.37 - 4.30)	3.80 (1.69 - 4.38)	1/4" & 3/8"	25-35*	10
	18	5.27 (3.39 - 5.89)	5.56 (3.10 - 5.84)	1/4" & 1/2"	25-35*	10
	24	7.03 (2.11 - 8.20)	7.32 (1.55 - 8.20)	3/8" 5/8"	25-35*	10
<b>BREEZELESS+ WALL MOUNTED</b>						
<b>MSF</b>						
	9	2.64(0.85-3.28)	2.93(0.79-3.37)	1/4" & 3/8"	25-35*	10
	12	3.52(1.31-4.37)	3.81(0.88-4.54)	1/4" & 3/8"	25-35*	10
<b>COMPACT CASSETTE</b>						
<b>MCA</b>						
	9	2.6(1.03- 3.2)	3.0(0.82-3.4)	1/4" & 3/8"	25-35*	10
	12	3.52(0.85-4.11)	3.81(0.47-4.31)	1/4" & 3/8"	25-35*	10
	18	5.28(2.90-5.59)	5.57(2.37-6.10)	1/4" & 1/2"	25-35*	10
<b>DUCTED**</b>						
<b>MTIU</b>						
	9	2.6(1.03-3.2)	3.0(0.82-3.4)	1/4" & 3/8"	25-35*	10
	12	3.52(0.53-3.99)	3.81(1.00-4.39)	1/4" & 3/8"	25-35*	10
	18	5.28(2.55-5.86)	5.57(2.20-6.15)	1/4" & 1/2"	25-35*	10
<b>CONSOLE</b>						
<b>MFA2U</b>						
	12	3.52(0.76-4.25)	3.81(0.45-4.69)	1/4" & 3/8"	25-35*	10
	17	4.98(2.64-5.57)	5.28(2.20-6.30)	1/4" & 1/2"	25-35*	10

\*Max pipe length varies depending on outdoor/indoor combination - see manual for full details.

\*\*Vertical Ducted available at additional cost



## MULTI SPLIT QUICK REFERENCE GUIDE

CHARGE g/M	INTERCONNECTING CABLE	POWER TO	Power Supply	
			Ph	Fuse (A)
<b>OUTDOOR UNITS</b>				
See Indoor	See Indoor	Outdoor	1	16
See Indoor	See Indoor	Outdoor	1	16
See Indoor	See Indoor	Outdoor	1	16
See Indoor	See Indoor	Outdoor	1	20
See Indoor	See Indoor	Outdoor	1	20
See Indoor	See Indoor	Outdoor	1	25
See Indoor	See Indoor	Outdoor	1	25
<b>AG ECO WALL MOUNTED</b>				
12	4 Core 1.5mm	Outdoor	1	N/A
12	4 Core 1.5mm	Outdoor	1	N/A
12	4 Core 1.5mm	Outdoor	1	N/A
24	4 Core 1.5mm	Outdoor	1	N/A
<b>BREEZELESS+ WALL MOUNTED</b>				
12	4 Core 1.5mm	Outdoor	1	N/A
12	4 Core 1.5mm	Outdoor	1	N/A
<b>COMPACT CASSETTE</b>				
12	4 Core 1.5mm	Outdoor	1	N/A
12	4 Core 1.5mm	Outdoor	1	N/A
12	4 Core 1.5mm	Outdoor	1	N/A
<b>DUCTED**</b>				
12	4 Core 1.5mm	Outdoor	1	N/A
12	4 Core 1.5mm	Outdoor	1	N/A
12	4 Core 1.5mm	Outdoor	1	N/A
<b>CONSOLE</b>				
12	4 Core 1.5mm	Outdoor	1	N/A
12	4 Core 1.5mm	Outdoor	1	N/A

\*Max pipe length varies depending on outdoor/indoor combination - see manual for full details.

\*\*Vertical Ducted available at additional cost