



MEDIT *i700* wireless



Magic Made Easy with a Simple Touch

Get the power to take your practice to the next level!

Beyond i700's Proven Tech

Still the same **super fast, light, and accurate i700**.
But now **wireless**.



No More Wires

Free from wires, scanning is comfortable at any angle. Scan proximal areas effortlessly without constraints in movement.



Fast, Accurate. Connected

Scanning speed of up to 70 FPS*. You can experience the amazingly smooth and fast scanning performance of Medit's best-selling model. Enjoy the fast speed of the i700 wirelessly, flawlessly.



Supercharged Yet Light

Outstanding weight balance even with a battery attached for added comfort.



Powerful Hardware Meets Versatile Software

Optimized for convenience. Not only from hardware aspects, but also software. i700 wireless, packed with the latest of MEDIT technology.

*Frames per second: number of frames of scanning data per second

- Full arch accuracy: 10.9 μm ± 0.98
- Up to 70 FPS

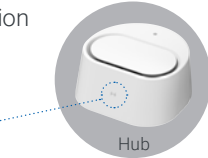


Small Tip
(Sold separately)
For easy application to the posterior region for patients with small oral cavity

Reversible Tip
No need to twist your wrist for maxillary scans

Remote Control
Conveniently check scan data from the scanner itself and prevent cross-contamination

60 GHz Wireless Technology
For high-speed wireless connection



Battery
Scan up to 30 cases with 1 battery*

Light & Weight Balanced
For stable, comfortable use

UV-C LED Disinfection
Lower risk of contamination inside the handpiece

Auto Calibration
Automatic tool makes calibration a breeze



Wider Scan Area
Enlarged scanning window captures large areas at once while maintaining the small size of the scanner head

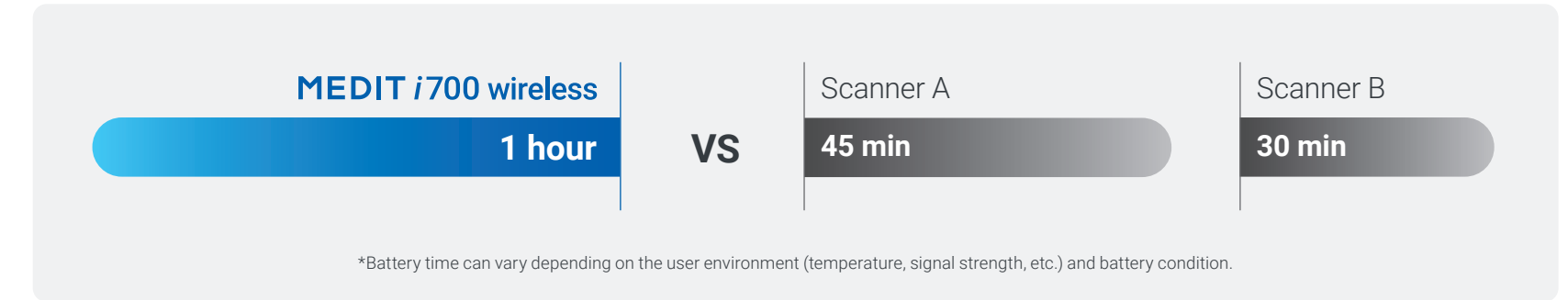
When the scanner's cable disappears, so do restrictions to scan movements. Strengthened impact resistance minimizes damage from accidental drops. Weight balanced design of the i700 wireless provides a stable, comfortable scanning experience.

*Performance may vary according to usage conditions.

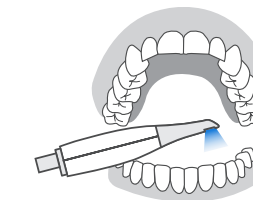


The Best Battery Life Ever

1 hour of continuous scanning, **up to 8 hours** in standby mode



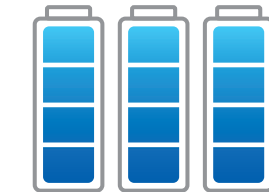
All-Day-Scan-with-Single-Battery. Scan all day without worrying about charging.



Maxillary + Mandibular + Occlusion
Total scan time of
2 mins*



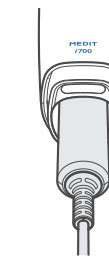
Scan up to **30 cases** with 1 battery



Up to **90 cases** using 3 included batteries



Intelligent power management function automatically switches the device to sleep mode when not in use, standing by up to 8 hours. It takes just seconds to wake the device for scanning.



Wired power connection: Once you've used up all 3 included batteries, simply connect the power cable and keep using the device.

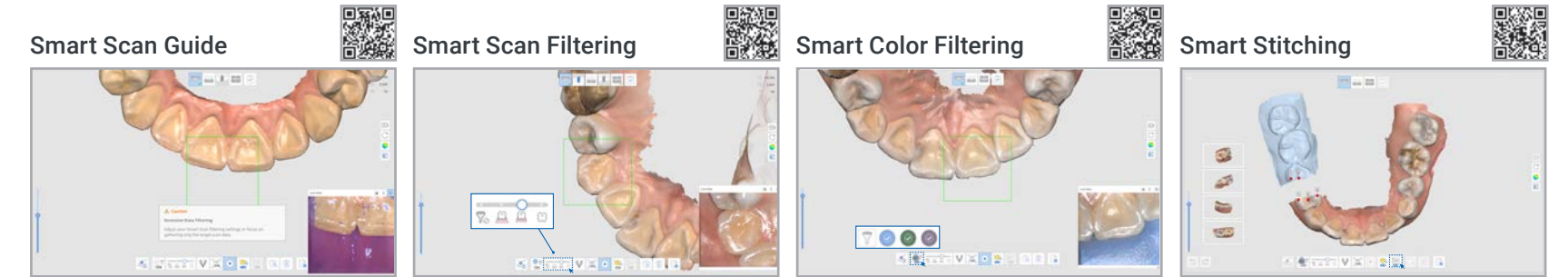
*Performance may vary according to usage conditions.

Magical Scanning, Easier Than Ever



Experience amazing digital dentistry with **Medit Scan for Clinics**. Our cutting-edge software technology makes scanning more convenient for you.

For scanning assistance



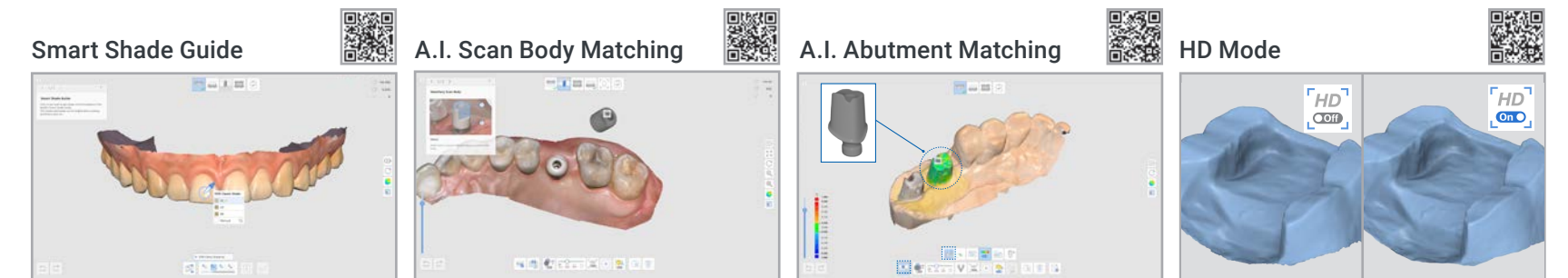
Smart Scan Guide
Strengthened user guidance provides help for abnormalities detected during scanning.

Smart Scan Filtering
Enhanced A.I. filtering performance eases the scanning process by filtering out soft tissue such as lips, cheeks, and tongue.

Smart Color Filtering
Automatically filters registered colors, such as the color of medical gloves, during scanning.

Smart Stitching
Scan with your own scanning strategy. Fragmented scan data are aligned with automatically detected common area.

For more precise and accurate scan data



Smart Shade Guide
Automatically distinguishes and suggests the best matching shade from scan data.

A.I. Scan Body Matching
Secures accurate scan body data in difficult-to-scan areas, such as the posterior region.

A.I. Abutment Matching
Secures accurate margin data in difficult-to-scan situations.

HD Mode
Get a sharper scan image in the margin area with the upgraded HD Mode.

Medit Link

Begin your **clinic's data management** with **Medit Link**.

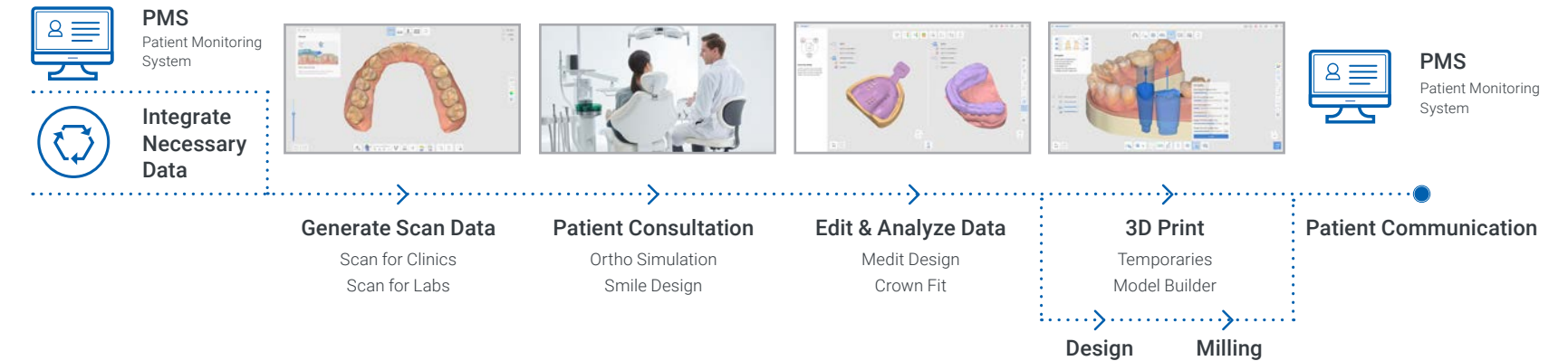


You can create and manage scan data matched with patient information in the electronic chart program and link them with treatment solutions of various workflows. The various apps of the Medit Link App Box help provide higher standard consultation that is easier to understand for patients.

Medit Link's cloud storage encrypts and stores data for reliable protection against virus and ransomware attacks. It also enables data sharing and real-time communication between dentists, patients, and lab technicians anytime, anywhere on a PC, a tablet, or any mobile device with an internet connection.

Digital Dentistry with **Medit Link & Medit Apps**

Digitize Your Treatment with Medit Link



Use Your Scan Data for Much More

Scan data created with the Medit i700 wireless can be linked to the workflow of various solution providers via Medit Link. The data can also be used with any software that can open standard 3D formats such as STL, PLY, and OBJ. And the wide utilization of our open system is expanding as we speak.

What you can do in Medit Link :

Clear aligners | Crown and bridges | Implant-supported restorations | Full and partial dentures Orthodontics | Implant surgical guides | Sleep apnea devices
Dental models | 3D printing...



Medit Apps

Medit Apps quickly introduce digital workflows using scan data and help you to utilize them in a diverse range of cases. You can analyze data, create restorations and models, and communicate with your patients in the simplest way. With Medit Apps, a lot more can be done on the chairside like designing splints, temporaries, bridges, and so on! By the way, you don't need to have a Medit scanner or pay a huge annual fee to join the Medit Ecosystem. Feel literally free to enjoy digital dentistry with Medit Apps.

→ See Next Page for **Medit Ecosystem**



Medit Apps

Smile Design	Ortho Simulation	Occlusion Analyzer	Crown Fit	Design
Model Builder	Temporaries	DCM Converter	Calibration Wizard	

Practice Management & Imaging

Opental software	DTX STUDIO	OnyxCeph3TM	AIS
Owandy RADIOLOGY	YOSHIDA	OneClick	360magn
	Dolphin		

Dental CAD & Smile Design

exocad	dental wings	coDiagnostiX®	Straumann® CARES®
Clinux	Splint	3DmeStudio	SmileFy
3dme solutions	3DLynx	DTS	3DIEMME

Sleep Apnea

PANTHERA	ResMed	SomnoMed	PROSOMNUS
	OrthoApnea		

Integration

3D Printers

formlabs	ASIGA	SprintRay	envisionTEC	chitubox	PYRAMIS	ACKURETTA	Veltz	ZENITH
NextDent	HeyGEARS	KULZER	ELEGOO	DEKEMA	phrozen	Photocentric	MICROLAY	W2P
DentaFab	Sindoh	DIO PROBO	yndetect	SHERA	carima	MOGASSAM		

Clear Aligners

clearcorrect	reveal	angelalign 时代天使	Smartee 注册	ACTIVE ALIGNERS	SPARK™	TRIO CLEAR	3M Science. Applied to Life.™	DynaFlex™
3D PREDICI	SIX MONTH SMILES	SMILE STYLER®	ACTIVE ALIGNERS	AirSmile®	alineadent	allRight	ARCAD	AURODENTAL
bussmann digitale ortho manufaktur	F&F & LONZI	ClearSmile	clearline	ClearSmile	crystalign	DENTiline™	exceed	exaligner™
EXAKTUS	KLINE	LINEO	nutislab	orthoclear™	ODL	ORGANICAL CAD CAM	PROLIGNER	Profaligner™
aphase	sm)ers	zenyom						

Others

DDX	easyrx	evident	MAGIC TOUCH SOFTWARE	MODJAW	smile in a box.com	ALIGNMENT TRU	Archimedes	ALIENMILLING
BlueSkyPlan.com	dicomLAB	DYNAMIC ALIGNMENT SOLUTIONS	DESS	DENTINOR	GuideMia	IMPACT CUMSHIELDS	SmileWarp	Syntonia
TEMPUS	3D Diagnostix	Procyon						

...and more!

Specifications

Category		Medit i700 wireless
Scanning Technology	Scanning Frame	Up to 70 FPS
	Imaging Technology	3D-in-motion video technology 3D full color streaming capture
	LED Source	LED
	Anti-Fogging Technology	Adaptive anti-fogging
Accuracy	Full-Arch	10.9µm ± 0.98
Handpiece	Dimensions	313 x 44 x 47.4 mm
	Total Weight	328 g (Includes battery, tip)
Tip	Tip Size	22.5 x 17.1 mm
	Scan Area	15 x 13 mm
	Autoclavable	Autoclave 150 times 121°C 30 mins (Gravity Type) 134°C 4 mins (Pre-Vacuum Type) 135°C 10 mins (Gravity Type)
	Reversible Tip	Yes
Special Mode	Remote Control Mode	Yes
	UV-C Disinfection	Yes
Connectivity		Wireless USB 3.1 Gen1 (Wireless Hub)



Please scan the QR code for up-to-date [system requirements](#). >>

About Us

Medit specializes in 3D measurement and CAD/CAM solutions for dental clinics and labs, including intraoral scanners, based on its own patented state-of-the-art technology. We also develop platform solutions for digital dentistry, supporting collaborative workflows. Additionally, the Solutionix line provides 3D scanners and software to the industrial market. Our goal is to provide innovative technology and the highest quality products to ensure mutual growth for all partners.

Our Medit Community

Continuous feedback, suggestions of new treatment workflows, and active discussion. From hot debates to fun chats, the Medit community is always lively with our passionate customers. Colleagues from all over the world actively support and help one another, and sincerely welcome new colleagues into digital dentistry.

Scan the QR code to join!

Medit and its community of colleagues support and wish you the best of luck on your new journey into digital dentistry.



User Group



Medit Academy



Help Center



SLOVENIA, BIH, MONTENEGRO, MACEDONIA, KOSOVO, ALBANIA

INTERDENT d.o.o. · Opekarniška c. 26 · SI - 3000 Celje
T: +386 (0)3 425 62 12 · E: info@interdent.cc · www.interdent.cc

CZECH REPUBLIC

INTERDENT s.r.o. · Foerstrova 12 · CZ - 100 00 Praha
T: +420 274 783 114 · E: interdent@interdent.cz

CROATIA

INTERDENT d.o.o. · Vinogradski odvojak 2d · HR - 10431 Sveta Nedelja
T: +385 (0)1 387 3644 · E: interdent@interdent.hr

REPUBLIC OF SERBIA

INTERDENT d.o.o. · Zemunska 22 · RS - 11070 Novi Beograd
T: +381 (0)11 217 53 74 · E: interdent.bg@gmail.com

SLOVAKIA

INTERDENT SK s.r.o. · Za dráhou 21 · SK - 902 01 Pezinok
T: +421 (0)903 418 001 · E: interdent@interdent.sk

